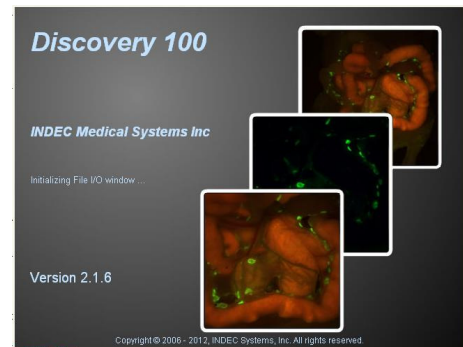


Discovery: Fluorescence imaging for the operating room

INDEC's new **Discovery Imaging System** is a fully integrated system for fluorescence imaging within the operating room.

Its small size and convenient operation make it perfect for *ex vivo* imaging of excised tissues – for translational research, developing fluorescent probes, or to help guide the surgical decisions¹.

Discovery is a complete, turn-key system and includes all hardware and software necessary for fluorescence imaging and scientific analysis of the acquired images.



Some Select Features:

- Discovery is a fully integrated system, delivered with its Imaging Chamber and a Win7 laptop, pre-loaded with the custom-built Discovery software.
- Discovery's small size (23 x 13 x 13 cm, H x W x D) and light weight (approx. 2.2 kg), make it convenient for use in the operating room, improving communication with the surgeon and accelerating critical decisions.
- Discovery delivers natural, color images for an intuitive understanding of the results.
- Discovery's integrated white-light illuminators deliver 'bright-field' imaging of specimens, helping correlate fluorescence with visual inspection.
- Discovery's large field of view (100 mm diagonal) and 50 micrometer spatial resolution are perfect for detailed imaging in a wide range of excised specimens.
- Discovery's external focusing adjustment makes it easy to get exactly the image you need, even after the specimen is loaded in the chamber.
- Discovery's software makes it easy for anyone to learn and operate, yet provides tools for rigorous, quantitative analysis of acquired images.
- Discovery can deliver any one of 12 standard fluorescence channels, ranging from blue (ex. CFP) to the near infrared (ex. ICG).
- Other, customized fluorescence configurations may also be available. Contact INDEC for details.

¹ Discovery is *not* yet approved for clinical, medical applications with human patients.