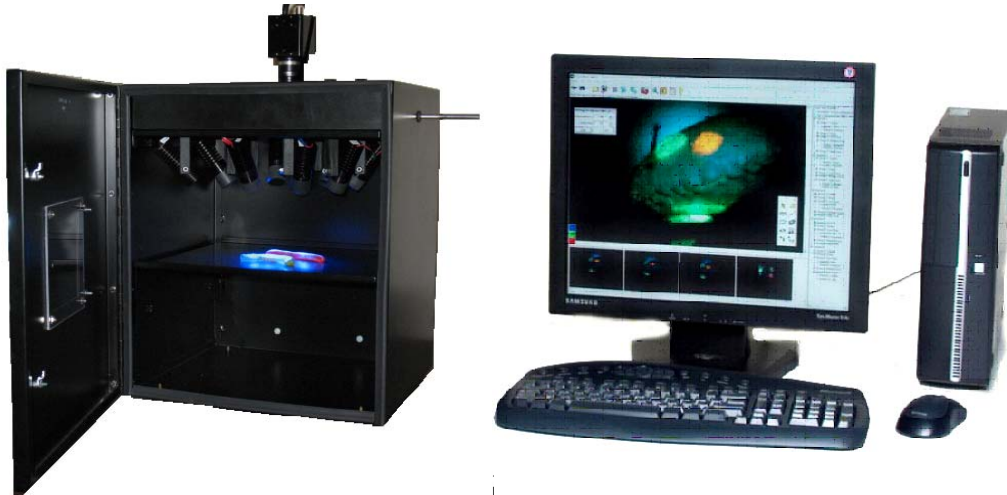


# FluorVivo™ 300

## Small Animal Fluorescence Imaging

from  
INDEC BioSystems in partnership with **ANTICANCER**  
INCORPORATED



### Summary

The FluorVivo 300 is a new member of INDEC BioSystems' family of *in vivo* imaging solutions. Developed in conjunction with AntiCancer, Inc., the FluorVivo 300 provides simple, fast, non-invasive *in vivo* imaging of fluorescent structures. Available at a fraction of the cost of other *in vivo* imaging systems, the FluorVivo 300 brings powerful imaging and analysis capabilities to a broad range of laboratories, ranging from basic research to pre-clinical drug evaluation and screening.

Like the Model 100, the Model 300 offers superb, multicolor, simultaneous, GFP-RFP imaging. This is a feature unique to the FluorVivo family.

The Model 300 adds two additional excitation and emission filter sets, allowing at least three alternative probes to be imaged. Switching between probes is simply accomplished via software setting and manually moving a slider. Choose the fluorophores you wish to use, and we will configure the Model 300 for optimum results.

### Essential and Unique Features of the Model 300

- *In vivo* fluorescence imaging for your choice of three probes (see Table 1 below)
- When used for GFP, it is optimized for simultaneous imaging (in a single exposure) of both GFP and RFP
- **Real time multicolor** imaging – images are in full color
- **Live video imaging and recording** – perfect for fluorescence surgery applications
- **Quantitative** – manual and automated analysis capabilities included
- A complete, **turn-key system** with the lowest cost of ownership on the market

## Applications

Applications in basic research include studies of gene expression and apoptosis, tumor growth and angiogenesis, and metastasis and invasion. Pre-clinical applications include drug screenings, drug targeting, and validation of animal models.

## Powerful Yet Easy-to-Use Software

- Intuitive control of acquisition parameters
- Quantitative image analysis: spatial and intensity measurements, manual and automated
- Export images, measurements to standard formats
- Simple to learn, easy to use

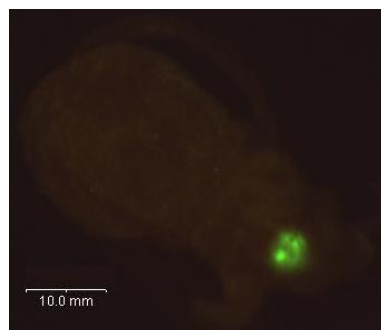
## The Advantages of Fluorescence Imaging

*In vivo* fluorescence imaging techniques offer significant benefits when compared with bioluminescence methods:

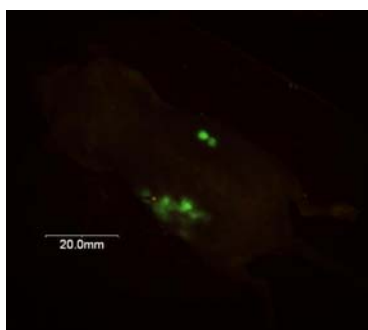
- Speed – exposure times are typically less than 1/10th of a second
- Economy – no costly injected substrates needed
- Flexibility – genetic control of expression of multiple, distinct fluorescent proteins permit almost unlimited experimental possibilities
- Future prospects – will take optimal advantage of new markers (e.g. new fluorescent proteins, quantum dots)

Channel Name	Relevant Probes
GFP	GFP Cy2™ Qdot® 525
YFP	YFP
RFP	RFP Cy3 Alexa Fluor® 555 Alexa Fluor 568 Alexa Fluor 594 dsRed2 Katushka/mKate mCherry Qdot 605 Qdot 625
Texas Red	Texas Red mPlum Cy3.5
Cy5	Cy5 Cy5.5 Alexa Fluor 647 Alexa Fluor 660 Alexa Fluor 680 Qdot 655
Near Infrared	Cy7 Alexa Fluor 750

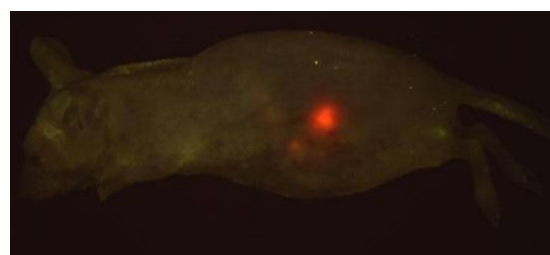
Table 1. Probe choices



*GFP-labeled human glioma cell based orthotopic tumor*



*Metastatic orthotopic liver tumor*



*DsRed2-labeled orthotopic pancreatic tumor*

*INDEC BioSystems' FluorVivo family of products are licensed under agreement from AntiCancer, Inc., (www.anticancer.com) such that non-profit entities purchasing this system are licensed under patents for imaging of fluorescent proteins held by AntiCancer and Caliper LifeSciences Corp. (www.xenogen.com). Additional licenses are necessary for commercial purposes. For additional information, contact AntiCancer, Inc., and Caliper LifeSciences Corp. (www.caliperls.com).*

To arrange an on-site demonstration or a demo of live mouse imaging via Internet, please contact INDEC BioSystems:

**INDEC BioSystems**  
**2210 Martin Ave.**  
**Santa Clara, CA 95050**  
**USA**

**Tel.: +1-408-986-1600**  
**Fax: +1-408-986-1605**  
**Email: sales@indecbiosystems.com**  
**Web: www.indecbiosystems.com**