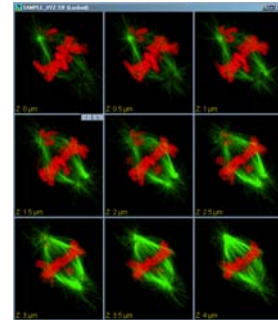


OLYMPUS FLUOVIEW™ Software and Systems Upgrades

Give your FLUOVIEW system a lift to the latest software versions (v. 5), along with a new computer running Windows XP/2000 with modern display technologies.

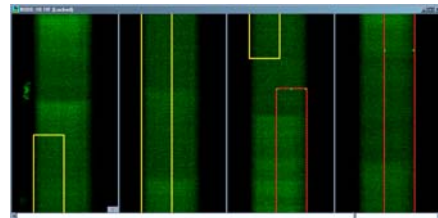
Computer Upgrade

- New Pentium IV 3+ GHz, 2 GB RAM, fast display graphics for 1- or 2-monitor display (second monitor optional), DVD burner, and Windows XP operating system



General improvements

- New image display structure provides
 - Easier, more flexible comparison of images
 - Linked movements of related windows
 - Flexible use of screen space, intuitive tiling
- Tiled line-scan displays for easier display and analysis of long line-scans
- Up to 70 simultaneously open experiments
- Convenient operation on 1- or 2-monitor systems
- Gallery window to easily find display windows
- Enhanced Navigation Bar for better image windows
- Sun/Moon screen bright/contrast controls
- Better file I/O GUI is redesigned for easier operation, recently loaded files listed
- Preferences simplify adjustments to settings made in FLUOVIEW Setup



Acquisition improvements

- Display-data-while-scanning allows window movements and overlap, multiple live acquisition windows
- Acquisition windows remember acquisition mode and restore FLUOVIEW to that mode when selected
- Tiled-display during acquisitions is available in all scan modes
- 3D display during acquisition provides live XT (XZ) and YT (YZ) scans (O3D)
- Extended-focus display during acquisition (O3D)
- Spectral detectors can be used as programmable emission filters (FV-1000)
- Photon counting function (FV-1000)
- 5 different scan speeds, instead of 3 (FV-1000)

Analysis improvements

- Volume measurements from intensity-thresholds and from overlays (O3D)
- 3D distance measurements (O3D)
- 'Local overlays' permit series-analyses over regions with different sizes and locations on each slice (O3D)
- 'Child overlays' provide annotations for overlay objects and dynamically report measurements from those overlays (O3D)
- User-definable 'active overlays' simplify frequently-used analyses
- Multiple analysis windows can be displayed simultaneously
- Multiple, simultaneous view processors for sophisticated image comparisons
- Oblique view of 3D and 4D data (O3D)
- 'Paper doll' printing of oblique view provides tangible display of data (O3D)
- New operators permit image rotations

Contact Information

INDEC BioSystems
2210 Martin Ave
Santa Clara, CA 95050, USA
Tel.: +1-408-986-1600
Fax: +1-408-986-1605
sales@imagingworkbench.com
www.imagingworkbench.com

Outside North America, visit
www.imagingworkbench.com
to find a distributor in your
country

All trademarks and copyrights are the properties of their respective holders.